

Mobile column lift

EHB707V11-6 Standard article no.: EHB707V11U06

Set of 6 columns, for heavy duty vehicles, capacity 6 x 7.5 t = 45 t, 400 V, cable connection of columns, hydraulic drive, adjustable forks for wheels Ø 550-1140 mm, length of fork 300 mm, operation and travelling device on each column.



specifications

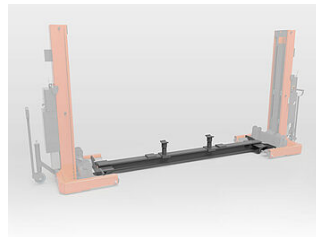
article no.		EHB707V11U06
lifting unit	type of columns	1 master, 5 slaves
	quantity of columns	6
	quantity of columns, maximum	6
load support	load support	adjustable wheel fork
	capacity per column	7.5 t
	capacity	45 t
	wheel size Ø minimum (mm)	550 mm
	wheel size Ø maximum (mm)	1140 mm
	length of fork (mm)	300 mm
lifting height	lifting stroke effective	1700 mm
	lifting height	1800 mm
	frame height at front (mm)	155 mm
speed	lifting time	110 sec.
	lowering time (under load)	110 sec.
drive	mode of drive	electro-hydraulic
	motor	AC voltage
	motor power per column (kW)	1.1 KW
power supply	type of power supply	mains supply
	electrical connection	400V/3Ph+N+PE/50Hz
	type of cable connection	cable connection within closed circuit
	length of connection cable column-column	10 m
	fuse (Amps)	16 A
	length of power supply cable	10 m
communication		cable communication
operation	mode of operation	operation at each column
	activation	all, individual
	control	electro-mechanical
regularisation	synchronisation	cycle control
travelling device	travelling device	at each column
	travelling device at front	2 front wheels, fixed
	travelling device at rear	1 wheel handle, spring-loaded, self-lowering under load
	ground clearance at front	15 mm
	ground clearance at rear	35 mm
load securing	load securing	hydraulic and mechanical
dimensions	length	1170 mm
	width	1130 mm
	height	2250 mm
	height of fork (mm)	100 mm
weight	weight per column (kgs)	510 kg
protection class		IP65
surface treatment	type of surface treatment	powder coating
	colour	orange RAL2004 / grey RAL7015



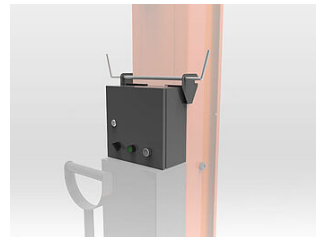
accessories



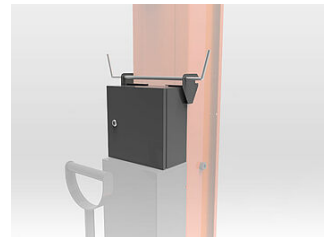
EHB-XACA04
remote control with cable



TR7065000
crossbeam, 15 t, length 3250 mm



EHB7060STBOX
Master control box, detachable



EHB7060VTBOX
Amplifier box



MS08LR
support stand, 8.2 t, 790-1270 mm



HS08LR
support stand, 8.2 t, 1260-1990 mm