



Mobile column

EHB903V11DC wireless

article no.: EHB903V11DC01-H

Mobile column EHB903V11DC with a capacity of 3 t each for lifting of light commercial vehicles or vans with an axle weight of up to 6 tons and a wheel diameter from 550 mm up to 1140 mm. The columns are radio-controlled and are equipped with a battery drive so that they can be used in a very flexible way. Recharging of the batteries is also possible during lift opera-



tion. All columns EHB903V11DC are identical and can be composed for example as follows:

- set of 4 columns consisting of 4 identical columns: 4 x EHB903V11DC01-H (4 x 3 t = 12 t)
- set of 6 columns consisting of 6 identical columns: 6 x EHB903V11DC01-H (6 x 3 t = 18 t)



specifications

article no.		EHB903V11DC01-H
lifting unit	type of columns	all columns identical
	quantity of columns	1
	quantity of columns, maximum	10
load support	load support	adjustable wheel fork
	capacity per column	3 t
	wheel size Ø minimum (mm)	550 mm
	wheel size Ø maximum (mm)	1140 mm
	length of fork (mm)	385 mm
lifting height	lifting stroke effective	1750 mm
	lifting height	1850 mm
	frame height at front (mm)	100 mm
speed	lifting time	55 sec.
	lowering time (under load)	55 sec.
drive	mode of drive	electro-hydraulic
	motor	DC voltage
	motor power per column (kW)	2.2 KW
power supply	type of power supply	battery-powered
	type of battery	deep cycle, maintenance-free
	battery capacity per column	80 Ah
	lift cycles at full load	40
	fuse, per column (Amps)	2.5 A
	total battery voltage	24 V
	length of charging cable	10 m
	charging concept	EasyCharge
	charging voltage	230 V
communication	frequency of power supply	50 Hz
	charging time	8 h
	communication via radio, wireless	
operation	mode of operation	operation at each column
	activation	all, individual, pair
	control	electronic
	Softstart	X
regularisation	synchronisation	proportional valves, infinitely variable
travelling device	travelling device	at each column
	travelling device at front	2 front wheels, fixed
	travelling device at rear	1 wheel handle, spring-loaded, self-lowering under load
	ground clearance at front	15 mm
	ground clearance at rear	35 mm
load securing	load securing	hydraulic and mechanical
dimensions	length	1200 mm
	width	1165 mm
	height	2255 mm



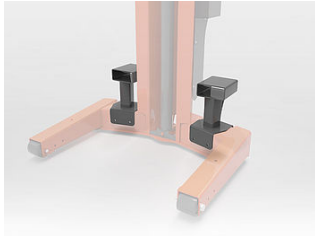
Mobile column EHB903V11DC wireless

PAGE 4/5

	height of fork (mm)	100 mm
weight	weight per column (kgs)	540 kg
protection class		IP54
surface treatment	type of surface treatment	powder coating
	colour	orange RAL2004 / grey RAL7015



accessories



EHB907FLP

Forklift pockets



EHB905TR113000

Crossbeam, 11 t, length 3000 mm



EHB905TR113500

Crossbeam, 11 t, length 3500 mm



HS08LR

support stand, 8.2 t, 1260-1990 mm



MS08LR

support stand, 8.2 t, 790-1270 mm