

Mobile column

EHB905V11DC wireless

article no.: EHB905V11DC01-H

The mobile column EHB905V11DC with a capacity of 5.5 t each, is particularly designed for buses and public transportation companies as well as trucks with an axle weight of up to 11 tons. A lift set can be composed of up to 10 columns:

- set of 4 columns consisting of 4 identical columns: 4 x EHB905V11DC01-H (4 x 5.5 t = 22 t)
- set of 6 columns consisting of 6 identical columns: 6 x EHB905V11DC01-H (6 x 5.5 t = 33 t)



specifications

| | | |
|---------------------------|------------------------------|---|
| article no. | | EHB905V11DC01-H |
| lifting unit | type of columns | all columns identical |
| | quantity of columns | 1 |
| | quantity of columns, maximum | 10 |
| load support | load support | adjustable wheel fork |
| | capacity per column | 5.5 t |
| | wheel size Ø minimum (mm) | 550 mm |
| | wheel size Ø maximum (mm) | 1140 mm |
| | length of fork (mm) | 385 mm |
| lifting height | lifting stroke effective | 1750 mm |
| | lifting height | 1850 mm |
| | frame height at front (mm) | 100 mm |
| speed | lifting time | 70 sec. |
| | lowering time (under load) | 70 sec. |
| drive | mode of drive | electro-hydraulic |
| | motor | DC voltage |
| | motor power per column (kW) | 2.2 KW |
| power supply | type of power supply | battery-powered |
| | type of battery | deep cycle, maintenance-free |
| | battery capacity per column | 80 Ah |
| | lift cycles at full load | 25 |
| | fuse, per column (Amps) | 2.5 A |
| | total battery voltage | 24 V |
| | length of charging cable | 10 m |
| | charging concept | EasyCharge |
| | charging voltage | 230 V |
| frequency of power supply | 50 Hz | |
| | charging time | 8 h |
| communication | | communication via radio, wireless |
| operation | mode of operation | operation at each column |
| | activation | all, individual, pair |
| | control | electronic |
| | Softstart | X |
| regularisation | synchronisation | proportional valves, infinitely variable |
| travelling device | travelling device | at each column |
| | travelling device at front | 2 front wheels, fixed |
| | travelling device at rear | 1 wheel handle, spring-loaded, self-lowering under load |
| | ground clearance at front | 15 mm |
| | ground clearance at rear | 35 mm |
| load securing | load securing | hydraulic and mechanical |
| dimensions | length | 1200 mm |
| | width | 1165 mm |



Mobile column
EHB905V11DC wireless

| | | |
|--------------------------|---------------------------|-------------------------------|
| | height | 2255 mm |
| | height of fork (mm) | 100 mm |
| weight | weight per column (kgs) | 540 kg |
| protection class | | IP54 |
| surface treatment | type of surface treatment | powder coating |
| | colour | orange RAL2004 / grey RAL7015 |



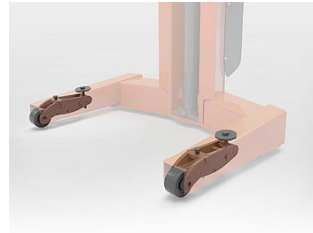
accessories



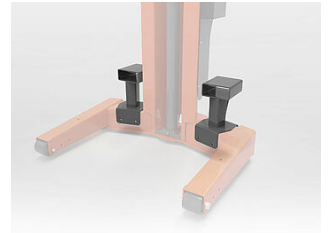
EHB907DC01-H-VZ
Hot galvanisation per column
EHB90xDC



EHB907TDH
hydraulic pallet jack



EHB907TDA
front wheels height adjustable



EHB907FLP
Forklift pockets



EHB907-LS-PR503-385
Load support, pluggable



EHB905TR113000
Crossbeam, 11 t, length 3000
mm



EHB905TR113500
Crossbeam, 11 t, length 3500
mm



EHB907TRT412TR01-38
5
Basic cross beam 880 mm,
tractor support at front



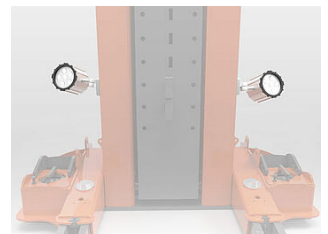
EHB907TRT412TR02-38
5
Basic cross beam 640 mm
tractor support at rear



HS08LR
support stand, 8.2 t, 1260-1990
mm



MS08LR
support stand, 8.2 t, 790-1270
mm



EHB907SPOT02
2 LED spots