

## Mobile column

### **EHB907V14DC wireless**

article no.: EHB907V14DC01-H

Mobile column for heavy-duty commercial and special vehicles with a wheel diameter of up to 1490 mm. The column is equipped with a low maintenance hydraulic drive and is battery-powered for use independent from mains supply. Operation and travelling device on each column. A complete lift set can be composed as follows (max. 10 columns per set):

- set of 4 columns consisting of 4 identical columns: 4 x EHB907V14DC01-H
- set of 6 columns consisting of 6 identical columns: 6 x EHB907V14DC01-H



## specifications

<b>article no.</b>		EHB907V14DC01-H
<b>lifting unit</b>	type of columns	all columns identical
	quantity of columns	1
	quantity of columns, maximum	10
<b>load support</b>	load support	adjustable wheel fork
	capacity per column	7.5 t
	wheel size Ø minimum (mm)	550 mm
	wheel size Ø maximum (mm)	1490 mm
	length of fork (mm)	385 mm
<b>lifting height</b>	lifting stroke effective	1750 mm
	lifting height	1850 mm
	frame height at front (mm)	100 mm
<b>speed</b>	lifting time	90 sec.
	lowering time (under load)	90 sec.
<b>drive</b>	mode of drive	electro-hydraulic
	motor	DC voltage
	motor power per column (kW)	2.2 KW
<b>power supply</b>	type of power supply	battery-powered
	type of battery	deep cycle, maintenance-free
	battery capacity per column	80 Ah
	lift cycles at full load	20
	fuse, per column (Amps)	2.5 A
	total battery voltage	24 V
	length of charging cable	10 m
	charging concept	EasyCharge
	charging voltage	230 V
frequency of power supply	50 Hz	
	charging time	8 h
<b>communication</b>		communication via radio, wireless
<b>operation</b>	mode of operation	operation at each column
	activation	all, individual, pair
	control	electronic
	Softstart	X
<b>regularisation</b>	synchronisation	proportional valves, infinitely variable
<b>travelling device</b>	travelling device	at each column
	travelling device at front	2 front wheels, fixed
	travelling device at rear	1 wheel handle, spring-loaded, self-lowering under load
	ground clearance at front	15 mm
	ground clearance at rear	35 mm
<b>load securing</b>	load securing	hydraulic and mechanical
<b>dimensions</b>	length	1200 mm
	width	1365 mm



**Mobile column**  
**EHB907V14DC wireless**

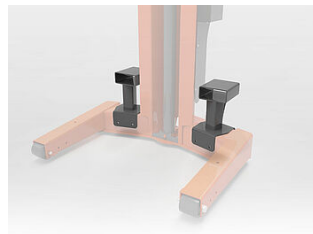
	height	2255 mm
	height of fork (mm)	100 mm
<b>weight</b>	weight per column (kgs)	575 kg
<b>protection class</b>		IP54
<b>surface treatment</b>	type of surface treatment	powder coating
	colour	orange RAL2004 / grey RAL7015



**accessories**



**EHB907TDH**  
hydraulic pallet jack



**EHB907FLP**  
Forklift pockets



**EHB907TR17**  
Truck crossbeam, 17 t, length  
3000 mm



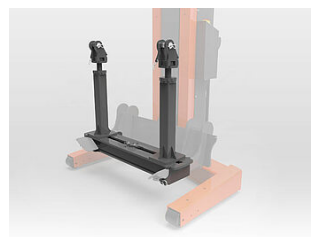
**EHB907-LS-PR503-385**  
Load support, pluggable



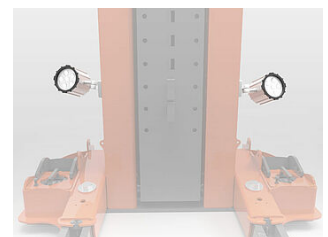
**EHB907TRT412TR01-38**  
**5**  
Basic cross beam 880 mm,  
tractor support at front



**EHB907TRT412TR02-38**  
**5**  
Basic cross beam 640 mm  
tractor support at rear



**EHB907TRT412TR03 +**  
**EHB907TRT412LS03**  
Load support, 8.5 t, length 1070  
mm for EAGLE IV/V



**EHB907SPOT02**  
2 LED spots