



Mobile 2-post lift

FHB3500-DC01

article no.: FHB3500-DC01

Mobile lift, capacity 3500 kg, battery driven, lifting height 194 cm, symmetric swivel arms, drive-in width 2300 mm, electro-hydraulic drive.

**specifications**

article no.		FHB3500-DC01
load support	load support	4 swivel arms, symmetric
	capacity	3.5 t
	length of swivel arm at front, minimum (mm)	560 mm
	length of swivel arm at front, maximum (mm)	1300 mm
	length of swivel arm at rear, minimum (mm)	560 mm
	length of swivel arm at rear, maximum (mm)	1300 mm
	distance between supports, maximum	2950 mm
	load pad Ø	120 mm
lifting height	lifting stroke effective	1800 mm
	lifting height	1940 mm
	minimum support height (mm)	120 mm
	height adjustment of load pad	40 mm
speed	lifting time	40 sec.
	lowering time (under load)	40 sec.
drive	mode of drive	electro-hydraulic
	motor	DC voltage
	motor power (kW)	2.2 KW
power supply	type of power supply	battery-powered
	type of battery	deep cycle, maintenance-free
	lift cycles at full load	20
	battery capacity	80 Ah
	total battery voltage	24 V
	length of charging cable	1 m
	charging concept	integrated charger
	charging voltage	230 V
	frequency of power supply	50 Hz
	charging time	8 h
operation	mode of operation	1 central control unit
	control	electronic
regularisation	synchronisation	master-slave cylinder system
travelling device	travelling device	2 front wheels, 1 detachable wheel handle at rear
	ground clearance at front	20 mm
	ground clearance at rear	90 mm
load securing	load securing	hydraulic and mechanical
dimensions	length	2960 mm
	width	3350 mm
	height	750 mm
	drive-in width	2300 mm
weight		1350 kg
protection class		IP54
surface treatment	type of surface treatment	powder coating
	colour	orange RAL2004 / grey RAL7015



accessories



FHB3500-Z-LS01
support set for Sprinter



FHB3500-Z-LS02
support set for Crafter, TGE



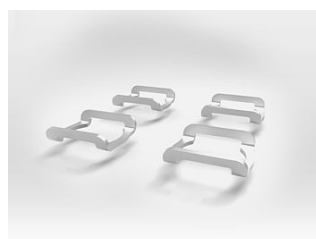
FHB3500-Z-LA100
2 extension tubes, 100 mm



FHB3500-Z-LA200
2 extension tubes, 200 mm



FHB3500-Z-LA300
2 extension tubes, 300 mm



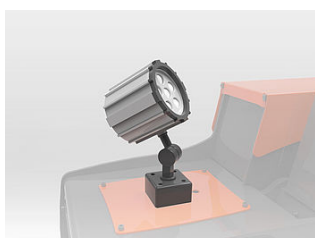
FHB3500-Z-UG
U-guidances for rubber pads



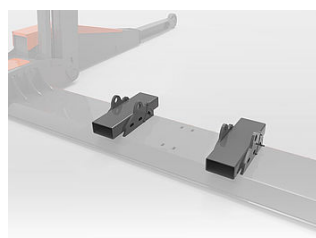
FHB3500-Z-RP01-4
rubber pads, height 100 mm



FHB3500-Z-WF625
Wheel forks, 2.5 t, wheel Ø
426-736 mm



FHB3500-Z-SPOT01
LED spot light, 12 W, 24V



FHB3500-Z-FLP
fork lift pockets



FHB3500-Z-TR03
2 cross beams, 3,5 t, length
2826 mm / 2566 mm



FHB3500-Z-FA3
2 platforms, 2.75 t, length 3.5
m, to drive-on with cars



FHB3500-Z-FATORO
4 wheel support plates, 2.75 t,
individually adjustable, for
mowing machines and tractors