

## Semi-scissor platform lift

### **HDS70 Tandem**

article no.: HDS70xxxxxF02

The heavy duty semi-scissor lift HDS70 consists of 2 single lifts in tandem, it is perfectly adapted for long vehicles such as complete truck and trailer or road trains. The total capacity is 70 t (2 x 35 t). Each lift can still be operated as a single lift.

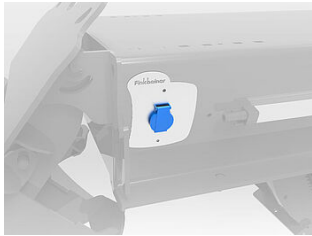


### specifications

<b>article no.</b>		HDS70xxxxxF02
<b>load support</b>	load support	platforms
	capacity	70 t
	quantity of platforms	4
	width of platforms (mm)	750 mm
	height of platforms (mm)	360 mm
	distance between platforms	1100 mm
	platform surface	smooth metal sheet
<b>lifting height</b>	lifting stroke effective	1780 mm
	lifting height / floor version	2140 mm
	lifting height / recessed version	1780 mm
<b>speed</b>	lifting time	90 sec.
<b>drive</b>	mode of drive	electro-hydraulic
	motor	AC voltage
	motor power (kW)	17.6 kW
<b>power supply</b>	type of power supply	mains supply
	electrical connection	400V/3Ph+N+PE/50Hz
	compressed air connection	6 bar
	fuse (Amps)	50 A
<b>operation</b>	mode of operation	1 central control unit
	activation	all
	control	electronic
	Softstart	X
<b>regularisation</b>	synchronisation	proportional valves, infinitely variable
<b>load securing</b>	load securing	hydraulic and mechanical
<b>protection class</b>		IP65
<b>floor load</b>	quality of foundation	C20/25
<b>surface treatment</b>	type of surface treatment	powder coating
	colour	grey RAL7015



accessories



**HDSF07-ST02**  
Electric sockets 230V



**HDSF07-DL02**  
Pneumatic sockets



**HDSF07-BL-LEDXX**  
Set with 4 to 10 LED lamps



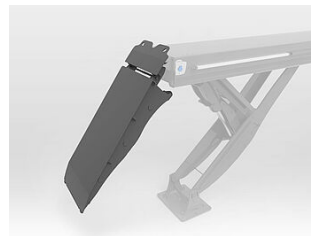
**HDSF07-AS0X**  
anti-skid surface anti-skid class R13



**HDSF0713-235**  
2 ascending ramps, 2350 mm



**HDSF0713-330**  
2 ascending ramps, 3300 mm



**HDSF0713-180H**  
2 ascending ramps, hanging, 1800 mm



**HDSMHFL160-200-F07**  
jacking beam 16 t, pneumatic



**HDSF07BA-XXXXX**  
floor levelling for pits of platforms



**HDSF07FV-XX**  
Galvanizing



**HDSF07DUROPLEX-XX**  
Special coating in addition to galvanizing



**HDSF07-SK01**  
2. control box in the washing area