

Support stand

MS08

article no.: MS08LR

Support stand, 8200 kg, height 790-1270 mm, movable, basic version.



specifications

article no.		MS08LR
load support	load support	support plate
	capacity	8.2 t
lifting height	height minimum	790 mm
	height maximum	1270 mm
travelling device	travelling device	guide wheels, spring-loaded
load securing	load securing	plug pin, manual
	lock spacing	70 mm
weight		30 kg
surface treatment	type of surface treatment	powder coating
	colour	grey RAL7015

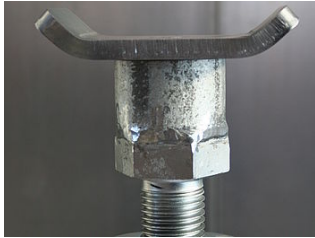


Support stand

MS08

PAGE 3/3

accessories



121060002

screw adjustment