



Stationary 2-post lift

TPL7500

article no.: TPL7500

Our stationary two-post lift with a capacity of 7.5 t is suitable for all current cars, vans, light duty trucks and electric vehicles. This lift is equipped with a unique load support area as the swivel arms have a stretched length of 4600 mm. Mounted on roller bearings, the swivel arms are easy to move and can be pushed together to save space. No cross connection between the columns.

**specifications**

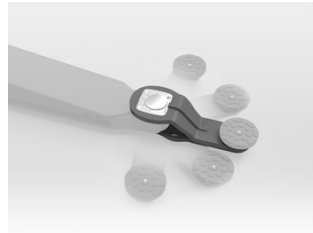
article no.		TPL7500
lifting unit	quantity of columns	2
load support	load support	4 swivel arms, symmetric
	capacity	7.5 t
	length of swivel arm at front, minimum (mm)	565 mm
	length of swivel arm at front, maximum (mm)	1250 mm
	length of swivel arm at rear, minimum (mm)	565 mm
	length of swivel arm at rear, maximum (mm)	1250 mm
	distance between supports, maximum	4600 mm
	load pad Ø	120 mm
lifting height	lifting stroke effective	1900 mm
	lifting height	2090 mm
	minimum support height (mm)	130 mm
	height adjustment of load pad	60 mm
	height maximum	4780 mm
speed	lifting time (with nominal load)	approx. 60 sec
	lowering time (with nominal load)	approx. 45 sec (depending on load)
drive	mode of drive	electro-hydraulic
	motor	Three phase alternating current
	motor power per column (kW)	2.2 KW
power supply	electrical connection per column	400V/3Ph+N+PE/50Hz
	fuse (Amps)	16 A
communication		communication via radio, wireless
operation	mode of operation	operation at each column
	control	electronic
	Softstart	X
regularisation	synchronisation	proportional valves, infinitely variable
load securing	load securing	hydraulic and mechanical
dimensions	drive-in width	2500 mm - 3000 mm (variable)
weight		1900 kg
protection class		IP54
floor load	quality of foundation	C20/25, at least 200 mm
surface treatment	type of surface treatment	powder coating
	colour	orange RAL2004 / grey RAL7015



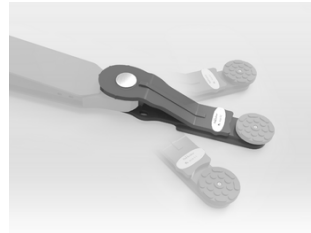
accessories



TPL7500-FM07
set of anchors, stainless steel



TPL7500-SWE250
swivel arm extensions, 250 mm,
7.5 t



TPL7500-SWE400
swivel arm extensions, 400 mm,
5 t



TPL7500-WF1250
4 wheel forks, 5 t, wheel Ø up to
740 mm



TPL7500-LS01
support set for Sprinter



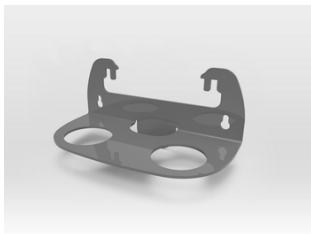
TPL7500-LA100
2 distance tubes 100 mm



TPL7500-LA200
2 distance tubes 200 mm



TPL7500-LA300
2 distance tubes 300 mm



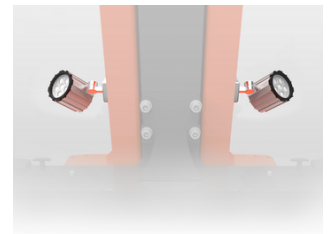
TPL7500-LAH
holder for supports and
extension tubes



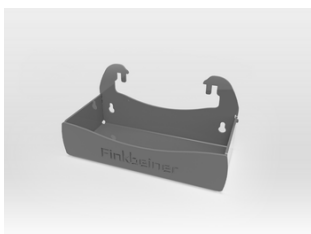
TPL7500-UG
U-guidances as anti-slip
protection



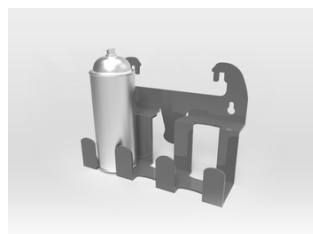
TPL7500-RP01-4
flat rubber pads



TPL7500-SPOT04
LED spots



TPL7500-TH
tool holder



TPL7500-SH
spray can holder